

LP7 Platform Lift



Technical Specification

Principal Information

The LP7 platform lift is the perfect solution for access problems up to 1500mm. The plug and play design means that the LP7 can be installed in a matter of hours allowing a quick turnaround for time critical projects. With no requirement for a pit, the LP7 comes with its own in-built automatic ramp for lower rises and has saloon style centre parting platform gates for higher lifting heights. The centre opening gates require less space on each landing compared to a more traditional single panel so the LP7 can fit in places other lifts simply cannot. The LP7's construction from powder-coated galvanised steel and anodised aluminium mean it can withstand even the harshest outdoor conditions. The LP7 can be installed on top of the floor level or can be recessed in a 50mm pit. The minimalistic design of the LP7 gives rise to clean lines that provide a lift that not only functions incredibly well but looks great.

Platform size	900mm x 1500mm
---------------	-----------------------

External size	1242mm x 1688mm*
---------------	-------------------------

Pit depth	50mm or inbuilt ramp
-----------	-----------------------------

Lifting height	1500mm
----------------	---------------

Load	350kg
------	--------------

Speed	0.05m/s
-------	----------------

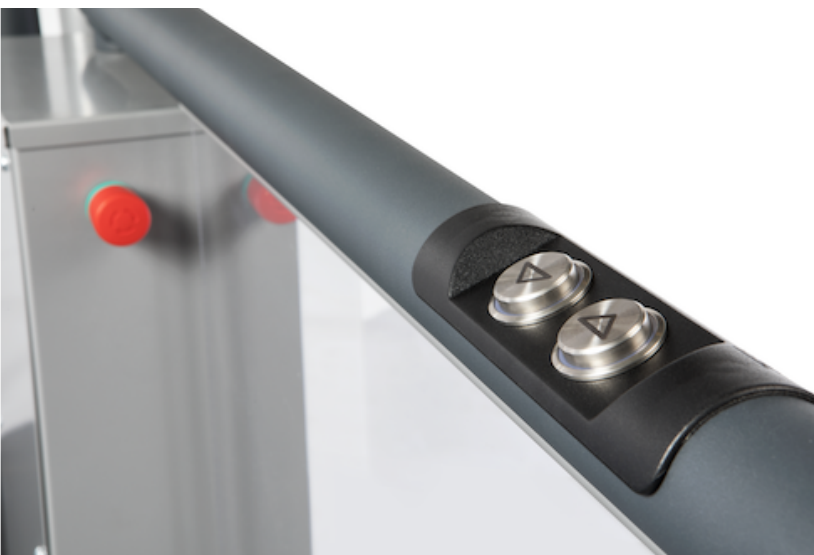
Drive mechanism	Electric Scissor
-----------------	-------------------------

*including upper landing gate width



Finishes

Frame construction	Powder-coated galvanised steel
Handrail construction	Powder-coated anodised aluminium
Platform sides	Transparent perspex
Platform flooring	Anti slip rubber flooring
On platform controls	Circular push buttons
Upper landing gate	Centre opening saloon style gate
Underside protection	Hard plastic bellows



Optional Finishes

Platform gate

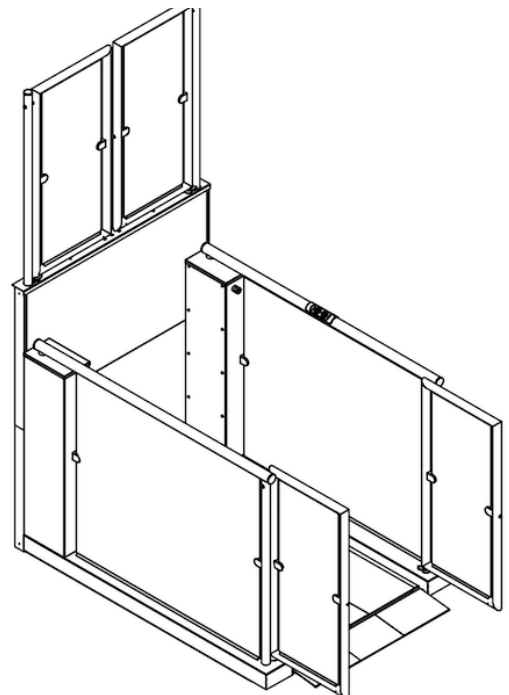
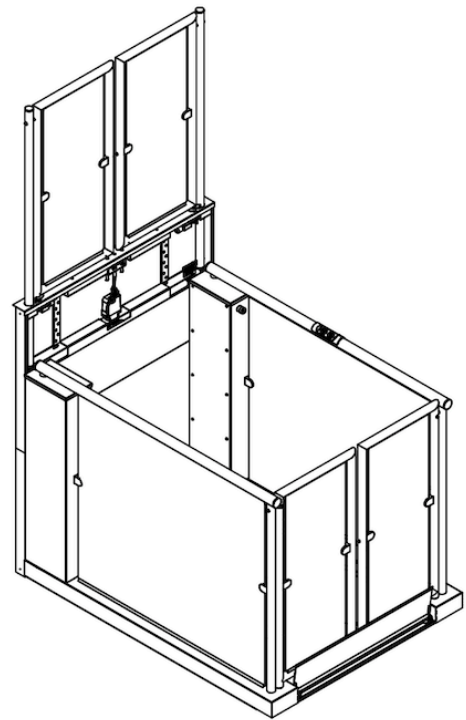
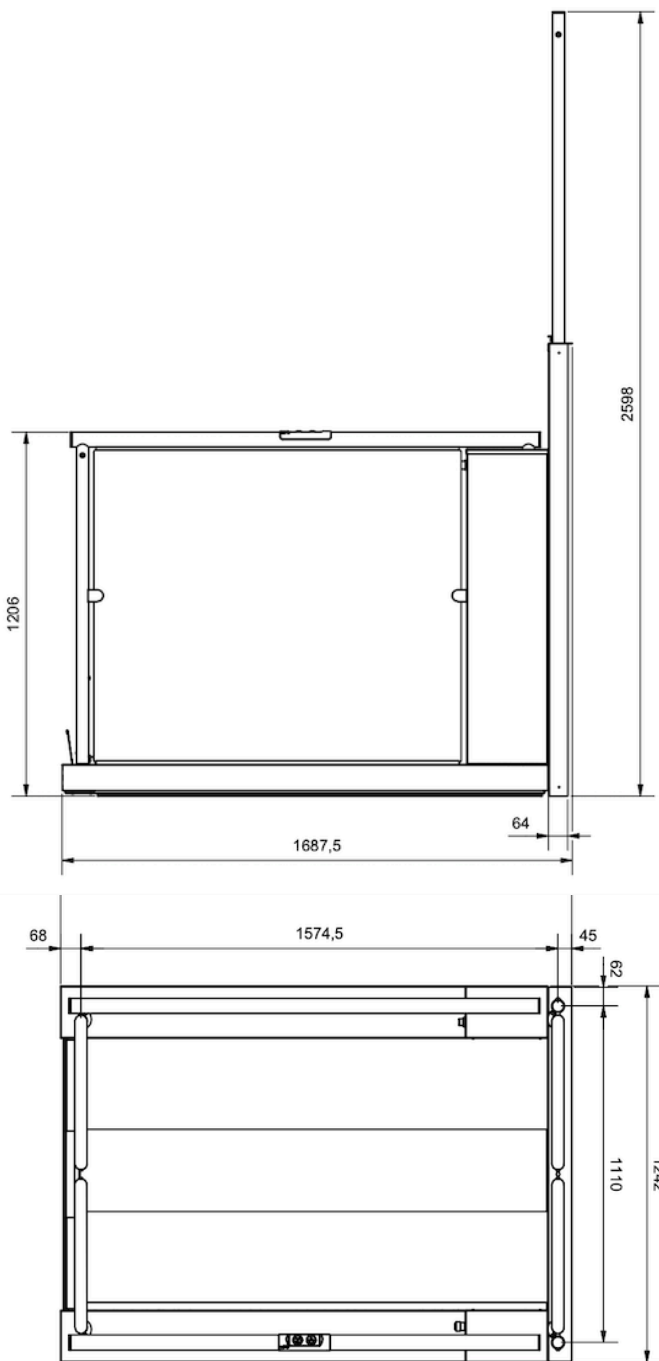
Saloon style platform gate for travels over 500mm

Landing push buttons

Bespoke push buttons available on request

Pit

Lift can be recessed if required



Electrical Requirements



Power supply	Single phase, 230V, 16A, 50Hz
Auxiliary circuit	24V DC
Power consumption	3W idle, 14.7W in use
Duty Cycle	18%
Fuse	T25A
Batteries	2x 12V, 7.2A

All equipment is made to the Machinery Directive 2006/EC/42



headoffice@access-lifts.co.uk

+44 (0) 800 652 5265

www.access-lifts.co.uk